



The *SmartPower* Solution Remote Power Manager

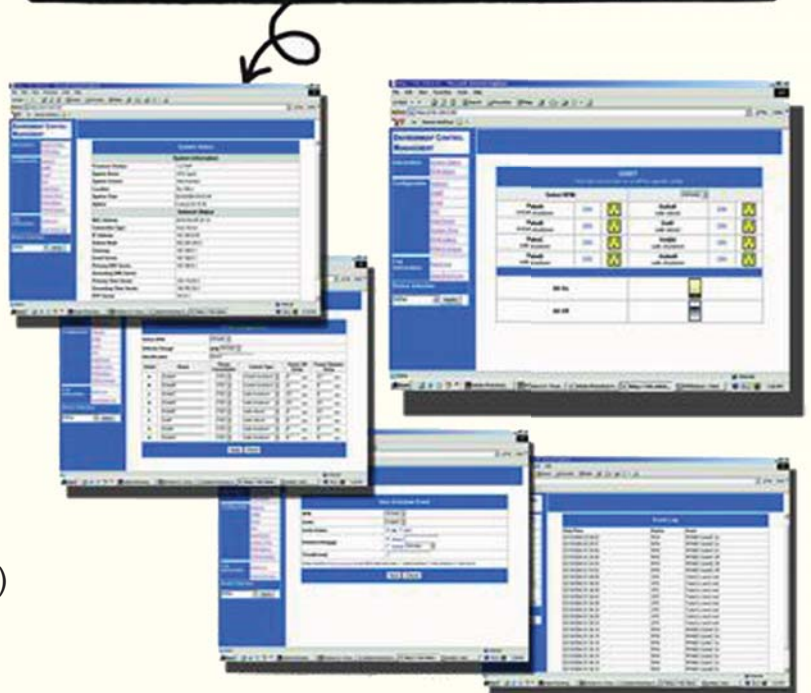
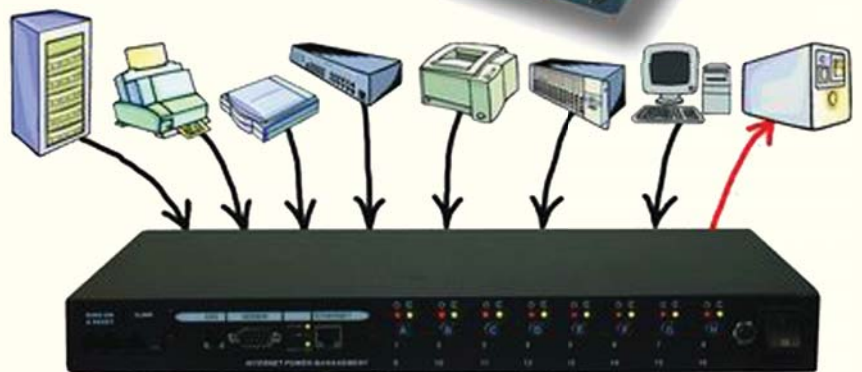
"You are on vacation in Maldives and your Network back in Bangkok locks up! What can you do?"

Remote Power Manager is your answer. RPM is a network manageable, intelligent power control unit designed to provide control of power to up to 8 electrical devices. This power nerve center gives you control over you electrical devices either through a network connection, modem dial-up or a telephone. Once connected you can re-set, power up/down the devices and much more...



Features:

- Support TCP/IP, SNMP, HTTP, SMTP, PPP, SNTP, Telnet protocol.
- Connect using 10/100Mbps Ethernet, modem dial-up or a phone.
- Safe power up, down or rebooting from any land or cell phone.
- Individually control each of the eight AC receptacles from anywhere in the world using standard Web Browser.
- Remotely and individually reboots locked up servers.
- Sequentially apply power to equipment plugged into the RPM.
- Customized TRAP and E-mail notification
- Receive daily / event alerts.
- Remote setup support, once an IP address is assigned, the unit can be setup remotely through Telnet commands.
- Daisy-Chain up to 16 units to control a total of 128 devices.
- Environmental Monitoring capabilities (Humidity, Temperature, Smoke, Motion, etc.) with NetFeeler Lite (add-on).





ENV, Modem & LAN Interface



Phone & iLink Interface



115v Power Outlets



230v Power Outlets



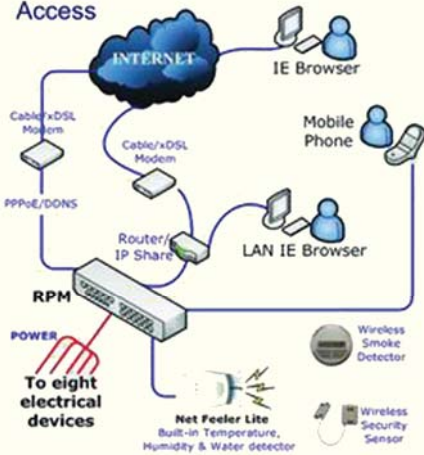
NT Ports



Daisy Chain Configuration

TYPES OF REMOTE POWER MANAGER					
Model Name	RPM 1500 [1500i]	RPM 1500 x 2 [1500i x2]	RPM 3000 [3000i]	RPM 5000	RPM 6000
INTERFACE					
Phone Interface	One input and one output, RJ11				
iLink Interface	One output & one input, connect to UPS				
ENV Interface	One RJ11, connect to temp. / humidity (n/a for client)				
RS-232 Interface	One RS232 port for PPP modem connection (n/a for client)				
LAN Interface	10/100Mbps, RJ45 (n/a for client)				
NT Ports	8 ports, RJ11				
Power Switch Button	One master switch & 8 switches for 8 output outlets				
Internet Control Mode Switch Button	One internet mode switches for 8 output outlets				
Power Output Outlets	8 NEMA 5-15R [IEC320R]	6 NEMA 5-15R & 2 L5-30R [6 IEC320R & 2EEC 19]	6 NEMA 5-15R & 2 L5-30R	[6 IEC320R & 2EEC 19]	
Power Input Cord	One SR NEMA 5-15P [One input power connector IEC320P]	Two SR NEMA 5-15P [Two input power connector IEC320P]	Two SR L5-30P [Two input power connector IEC320P]	One 50Amp terminal block	One 30Amp terminal block
LED INDICATOR					
On/Off Switch	8 red LEDs for 8 outlets				
Control Mode	8 green LEDs for internet / non internet control				
ID of iLink Cascade	16 yellow LEDs to indicate the ID of iLink cascade				
OPERATION & ENVIRONMENT					
Nominal Input Voltage	115Vac [230Vac]		115Vac	230Vac	
Input Voltage Range	85 to 230Vac				
Nominal Input Frequency	50 / 60Hz full range				
Maximum Output Capacity	15Amps [7Amps]	30Amps [14Amps]	30Amps [15Amps]	50 Amps	30 Amps
Input Protection	15Amps [7Amps] circuit breaker, press to reset	2 x 15Amps [2 x 7Amps] circuit breaker, press to reset	30Amps [15Amps] circuit breaker, press to reset.	50 Amps circuit breaker, press to reset.	30 Amps circuit breaker, press to reset.
Dimensions	1.5 x 17 x 7.9 (inches) 38 x 432 x 150 (mm)		5.25 x 17 x 15 (inches) 133 x 432 x 381 (mm)		
Weight	5.5 lbs 2.5 kg		15.4 lbs 7.0 kg		

Multiple Remote Access



Connect the power input cord to utility power Windows NT/2000 Server Ports A to H



Back View

AC Power Receptacles A to H



Front View

Active Module LED (Yellow) Momentary switch for Receptacle Master Power Switch



The Sun Power Co.,Ltd.

31 Soi Prachautit 59, Yeak 5, Tel.02-872-9501/4 Fax.02-872-9505
Bangmod,Thungkru, WWW.THESUNPOWER.CO.TH
Bangkok 10140 THAILAND. Email.sales@thesunpower.co.th