

WinPower

User's Manual

Table of Contents

Chapter 1 Winpower Introduction.....	4
1. Winpower profile	4
2. Winpower Structure	4
3. Winpower Application Range	5
4. Winpower Functions & Advantages	6
Chapter 2 Winpower Installation, Start & Uninstall	8
1. System Requirement	8
2. Winpower Installation Steps	8
3. Start/Stop Winpower	14
4. Uninstall Winpower	15
Chapter 3 Winpower User Interface.....	19
1. "Winpower Manage" window	19
2. Menu and Dialog	20
1) Auto Search UPS	20
2) "Administrator" Dialog	22
3) "Administrator Password Settings" Dialog	22
4) "Event log Viewer" Dialog	23
5) "Data log Viewer" Dialog	23
6) "Record Setting" Dialog	24
7) "UPS Control Parameters" Dialog	27
8) "Event Action" Dialog	29
9) "Shutdown Settings" Dialog	30
10) "UPS Self-Test Immediately" Dialog	33
11) "UPS Test Manager" Dialog	34
12) "UPS On/Off Manager" Dialog	35
13) "Schedule Viewer" Dialog	36
14) "Broadcast Message Settings" Dialog	37
15) "Email Settings" Dialog	38
16) "SMS Setting" Dialog	39
17) "Pager Setting" Dialog	40
18) "Monitor Remote UPS" Dialog	42
19) Bottom image	43
20) Temp	45
21) Date Format	46
22) Advance Settings	48
23) Language menu	50
24) "Communication Port Settings" Dialog	51
Chapter 4 How to do.....	53
1. How to realize the conversion of the appointed COM port?	53
2. How to realize broadcasting message in LAN	55
3. How to realize the schedule of adding/Removing UPS self-test	57
4. How to realize the schedule of adding/Removing UPS on/off	60
5. How to realize the network shutdown function	63

<i>6. How to realize Setting up shutdown parameter.....</i>	<i>64</i>
<i>7. How to realize the modification of UPS control parameter</i>	<i>67</i>
<i>8. How to realize system administrator operation and password modifying realize.....</i>	<i>68</i>
<i>9. How to realize sending event message by email.....</i>	<i>69</i>
<i>10. How to realize sending event messages by mobile phone.....</i>	<i>72</i>
<i>11. How to realize sending event messages by pager</i>	<i>75</i>
<i>12. How to realize telemonitoring any UPS in LAN within the same network.....</i>	<i>78</i>
<i>13. How to realize remote control of any UPS in different network in LAN</i>	<i>81</i>
<i>14. How to realize the Remote Control of any one of the UPS in Internet.....</i>	<i>85</i>
Appendix A—Glossary Explanation	89
Appendix B--Winpower Event Table	91

Chapter 1 Winpower Introduction

1. Winpower profile

Winpower is a UPS monitoring software which supports either stand alone computers or network (including LAN & Internet) connected computers.

Winpower is used to monitor the intelligent UPS and safeguard computer systems from unexpected crash when power fails. With Winpower software, user can monitor and configure the UPS on any computer in the same LAN. With this software, one UPS can provide multiple computers in network with security protection simultaneously, including shutting down system in security, saving application data and shutting down the UPS when AC fails.

2. Winpower Structure

Winpower is made up of three components: Agent, Monitor and TrayIcon.

Note : The concrete meaning of Agent refer to Appendix A — glossary explanation.

Agent is the core component of Winpower and runs as a system service on background. Communicates with the UPS, logs events, notifies users of events, arranges actions according to user's requirement and impending shutdown when necessary. Also, Agent can be managed by Monitor.

Monitor is the user interface application of Winpower. Relying on Agent, it gathers real-time UPS information, UPS status, server information and allows user to tailor the UPS working parameters. It can run on any computer on the LAN or stand alone computer.

TrayIcon is the management tool of Winpower. Only in Windows platform has this component.

It appears in Status Area of System task bar.

TrayIcon has two different icons for displaying current Agent status. The icons and the related status refers to the following table 1-2-1:

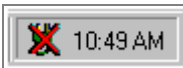
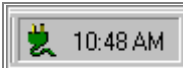
	Indicate the Agent is Stopped.
	Indicate the Agent is Running.

Table 1-2-1

While user right clicks the Manager icon, a shortcut menu will popup. The menu items are listed below:

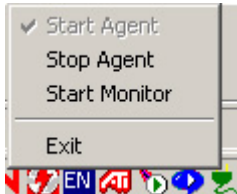


Diagram 1-2-1

The relationship between Agent and Monitor refers to the following Diagram 1-2-2

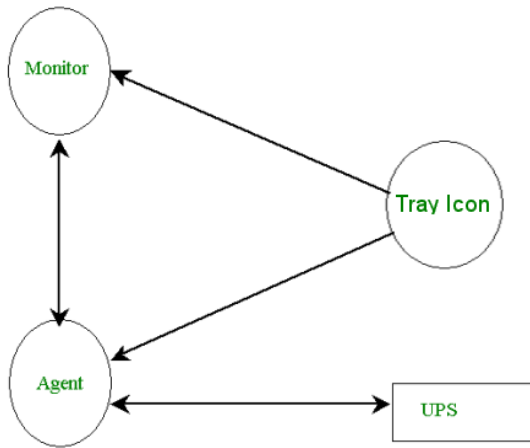


Diagram 1-2-2

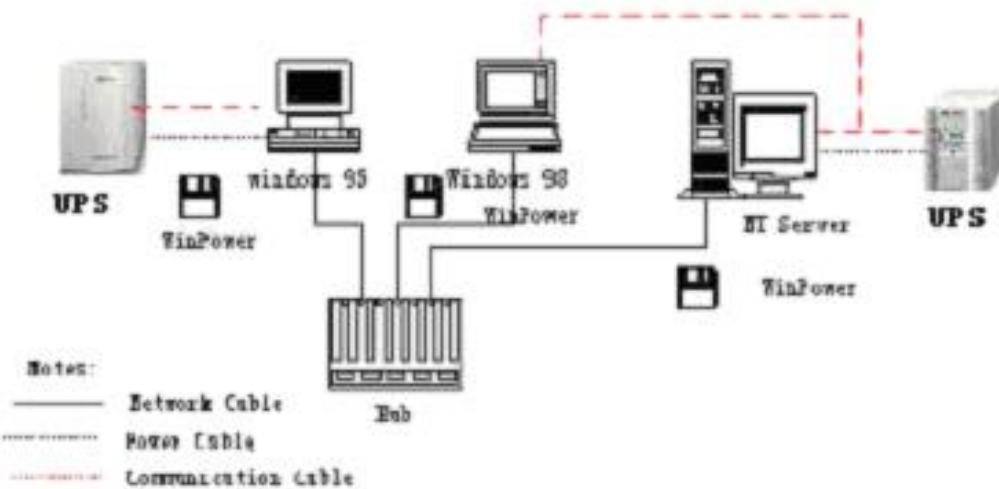
3. Winpower Application Range

- ✓ Application of stand alone computers refers to the following Diagram 1-3-1 :



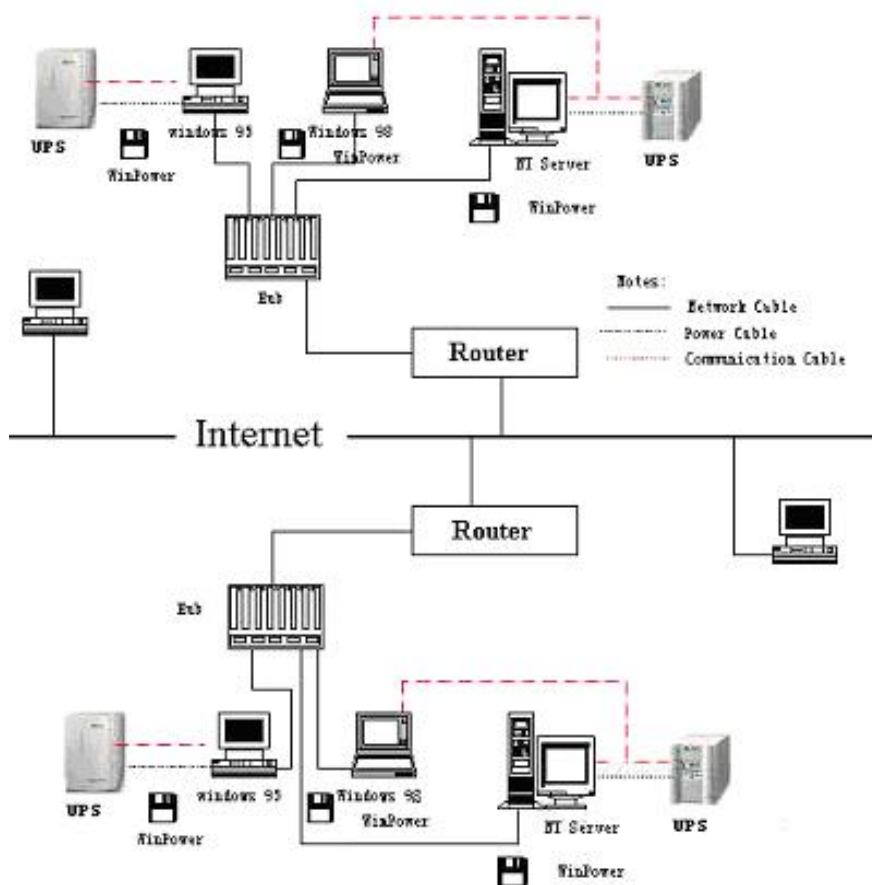
Diagram 1-3-1

- ✓ Application in the LAN refers to the following Diagram 1-3-2 :



(Diagram 1-3-2)

- ✓ Application in the Internet refers to the following Diagram 1-3-3 :



(Diagram 1-3-3)

4. WinPower Functions & Advantages

- ✓ When Agent start, it will run continuously, protect your equipment in every moment.
- ✓ Uninstall easily and clearly with no trace. Never increase spending on system and is Green software.
- ✓ You can have a panoramic view of all the information. The information of utility power, UPS, loads and battery is shown on the same window and you can take in everything in a glance.
- ✓ With the function of auto searching and telemonitoring any UPS in LAN.
- ✓ With the function of manual searching and telemonitoring any UPS in Internet.
- ✓ With security protection function. The system administrator password can be set to prevent others from sabotaging. Only the system administrator can have the full access, other users can only view.
- ✓ With the function of data auto protection. It can close most of the running applications and save the related files.
- ✓ With the function of time turning on and off the UPS, which can give maximum protection to your computer system.
- ✓ With the function of time self test of the UPS, which provide maximum protection to your UPS system.
- ✓ With the function of network shutdown, which supply your network system maximum protection.
- ✓ With the function of data logging (including UTILITY POWER, UPS, LOAD and BATTERY) and event logging, so that the system administrator can carry out the UPS system daily maintenance.

- ✓ Flexible means of information transfer let you know the UPS status at any moment and at everywhere, never miss any one because of the change of time and place.
 - With the function of broadcasting messages to every users in the network.
 - With the function of sending messages via pager.
 - With the function of sending messages by EMAIL.
 - With the function of sending messages via mobile phone sending SMS.